



www.captains-close.leics.sch.uk



Asfordby
Captain's Close
Primary School



Captains Close Primary School



@Accprimary

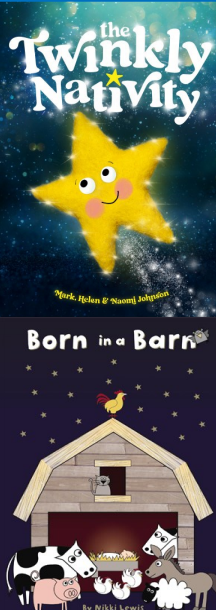
Friday 7th November 25

School Update



Autumn Term 25

- 10.11.25—Odd socks day
- 11.11.25—Remembrance service 11am
- 14.11.25—Children in need
- 17.11.25—2025 Residential Y5&Y6
- 20.11.25—Sky Challenge Choir
- 21.11.25—Coffee morning 9-10.30am
- 5.12.25—FOACC Christmas fayre 1pm
- 9.12.25—KS1 Nativity 2pm
- 10.12.25—Y3&Y4 Dodgeball & KS1 Nativity 6pm
- 11.12.25—Christmas Jumper Day
- Christmas Dinner Day!! (**BOOK ONLINE**)
- EYFS & Preschool Nativity 2pm & 5pm

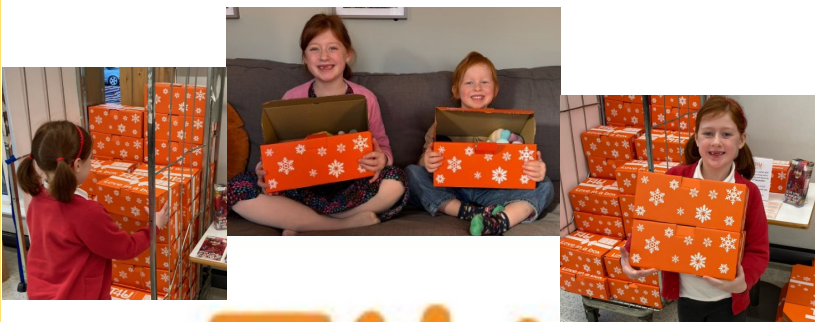


Tickets for our KS1 nativity Born in a Barn and our joined PS and EYFS Nativity The Twinkly Nativity will be available to reserve on ARBOR School Shop from 9am on 24th November 2025

There are 80 tickets per performance available and we cannot accept ANY extra. Max 2(KS1) or 3(PS&EYFS) tickets per family per performance.

Teams 4 U Shoebox Appeal - Your shoebox will be given to a vulnerable child, or family, through schools, nurseries, hospitals and orphanages. Our aim is that each box is given in relationship with the local community as part of a long-term commitment to these children. Please be a part of this ongoing story that is continuing to impact and change lives by donating a shoebox to this year's appeal!

You can collect a shoebox from Sainsburys in Metlton—the deadline is the 17th November—two of our wonderful students have already packed their boxes!



T4U



Year 5&6 transition event - Tuesday 11th November 4-5pm
Food Tech/ DT/ Business & Computer Science


John Fernelley College

SAVE THE DATE

Christmas Fayre

Friday 5th December



Headteachers Update

Dear Parents and Carers,

Next week we will be taking part in Anti-Bullying Week, an important opportunity to reinforce kindness, respect, and inclusion across our school community.

The week will begin on Monday with Odd Socks Day, a fun way for children to celebrate individuality and show that it's okay to be different. Please encourage your child to wear odd socks to school on Monday.

We will also hold a special assembly on Monday to introduce the theme of the week. Throughout the week, children will take part in classroom discussions and lessons focused on understanding bullying, promoting empathy, and building positive relationships.

As part of the assembly, we will launch a Good Deed Challenge. Each time a child completes a good deed, they will add a link to our Good Deed Paper Chain, which will grow throughout the week as a visual reminder of the kindness in our school.

We are also looking forward to welcoming parents to our Remembrance Service during the week, as we come together to reflect and remember.

Finally, on Friday we will be supporting Children in Need. Children are invited to come to school in pyjamas, Pudsey-themed clothing, or dressed down. We kindly ask that they bring a donation or donate online via the official BBC Children in Need website.

We are really looking forward to an inspiring and meaningful week together. Thank you for your support in helping us create a safe and caring environment for all our children.

Kind regards,

Headteacher





To grow awareness about mental health issues and reduce the stigma, wear off socks to acknowledge we all experience 'Odd Days!'

ODD SOCKS DAY

November 10th 2025

Remembrance

After half term, poppies will be on sale in reception, We will be sending some Y6 students around in the afternoons to classes with the selection. One of our fabulous parents has also been busy crocheting poppies, she is gifting them to the school to sell and they are stunning, be sure to secure one quickly!

Visit her on [Facebook /SoggyBunnyCrochet](#), [Instagram /soggy_bunny_crochet](#) or [Etsy /uk/shop/SoggyBunny](#)



We invite you to join our remembrance service on the green at 11am on 11.11.25. We will be leaving captains at 10.15am, any parent walkers please come to reception for then.

BBC CHILDREN IN NEED

Children in need is on 14th November 2025—School will be dressed down!
Onesies, PJs or bows in hair very welcome.

Please donate by bringing in £1 or online at bbc.co.uk/pudsey

POW! You have the power to do **ZAP!**
Super things
 for the children of our school **WOAH!**

By joining Friends of Asfordby Captain's Close Primary

Any amount we raise helps! Every single penny we raise goes into activities and buying resources to benefit the children of our school

By joining Friends of Asfordby Captain's Close Primary you are advocating on behalf of all of the children of our school including your own

There is so much we can do together! Even just one hour of your time is truly valuable and appreciated. Come and meet new friends!

Can you be our..... **SUPERHERO**

We are looking for both committee members and general volunteers. if interested, contact the school office at office@dsatcaptainsclose.org





Harvest Festival Donations



storehouse

Storehouse

The Hope Centre, 42-44 Nottingham Street, Melton Mowbray, LE13 1NW
storehouse@meltonvineyard.org.uk
www.storehousemelton.org.uk
facebook.com/storehousemelton

5th November 2025

Thank you!



Dear Staff and Pupils

Thank you so much for your generous donations to Storehouse, which will be used to help the most disadvantaged people in Melton and the surrounding area. Your continued support is very much appreciated.

As well as the provision of emergency food, household items, bedding, small electrical goods and clothing, for people who are referred to us, we are also a drop-in centre, serving free drinks and hot food, where everyone is welcome. Storehouse is based at The Hope Centre on Nottingham Street, our opening hours are, Monday, Wednesday and Friday 11am-1pm.

If you are aware of anyone who would appreciate attending one of our drop in sessions, or needs support from Storehouse please get in touch with us by emailing storehouse@meltonvineyard.org.uk.

If you would like to keep up-to-date with the latest Storehouse news, visit our Facebook page

Kind regards

Sarah Neale/
 Storehouse Administrator